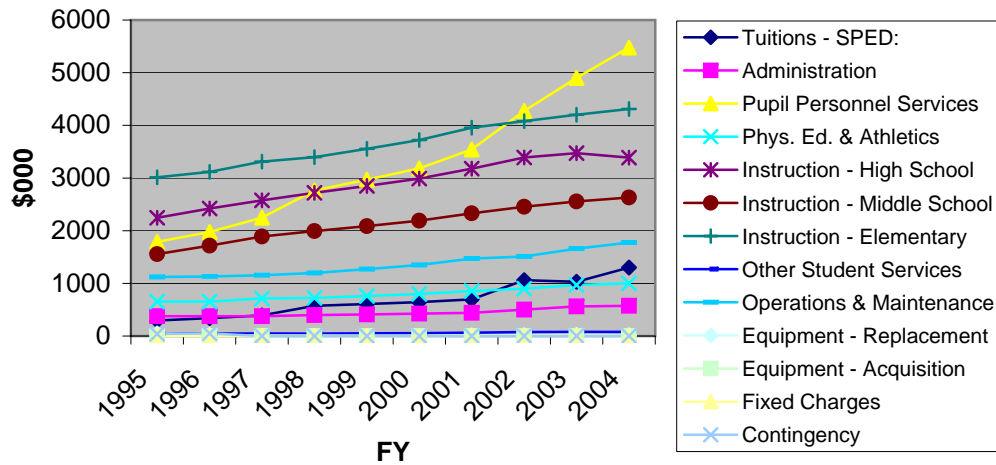
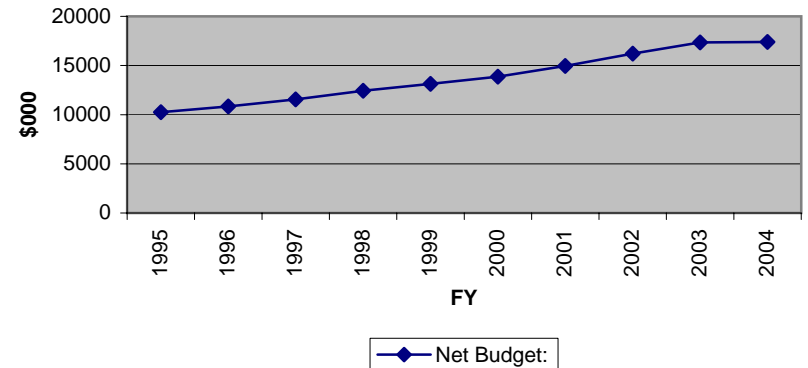


	1995	1996	1997	1998	1999	2000	2001	2002	2003	2004
Tuitions - SPED:	295	340	393	575	608	644	696	1059	1029	1301
Administration	377	377	377	397	410	424	441	501	563	573
Pupil Personnel Services	1789	1976	2249	2765	2967	3184	3542	4273	4901	5476
Phys. Ed. & Athletics	652	652	714	723	760	798	853	899	970	1000
Instruction - High School	2244	2422	2577	2720	2851	2988	3179	3391	3472	3388
Instruction - Middle School	1554	1715	1890	1992	2089	2190	2331	2456	2556	2630
Instruction - Elementary	3013	3117	3312	3395	3555	3723	3955	4080	4201	4312
Other Student Services	45	47	49	46	50	55	63	77	78	78
Operations & Maintenance	1120	1131	1153	1197	1271	1350	1471	1510	1660	1773
Equipment - Replacement	50	21	0	0	0	0	12	15	21	16
Equipment - Acquisition	0	0	0	0	0	0	0	0	0	0
Fixed Charges	5	5	5	5	0	0	5	6	6	6
Contingency	40	50	0	0	0	0	0	0	0	4
Sub-Total:	10889	11513	12326	13240	13967	14734	15852	17208	18428	19256
Less Tuitions	-630	-670	-772	-806	-835	-864	-902	-999	-1079	-1853
Net Budget:	10259	10843	11554	12434	13132	13868	14950	16209	17349	17403

School Budget 1995-2004

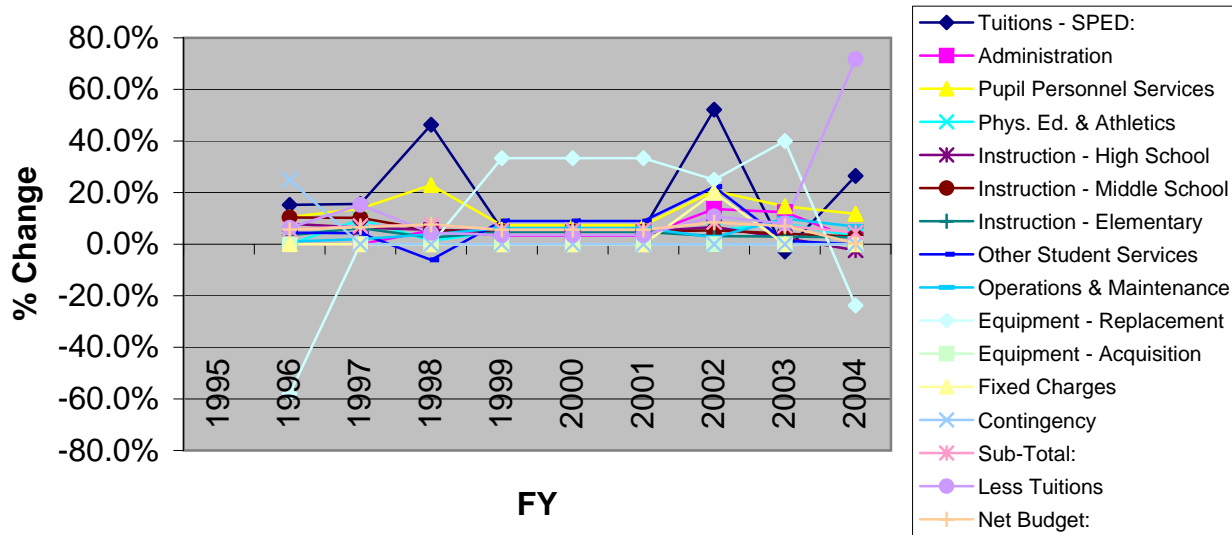


Net Budget: 1995-2004



	1995	1996	1997	1998	1999	2000	2001	2002	2003	2004
Tuitions - SPED:		15.3%	15.6%	46.3%	5.8%	5.8%	5.8%	52.2%	-2.8%	26.4%
Administration		0.0%	0.0%	5.3%	3.3%	3.3%	3.3%	13.6%	12.4%	1.8%
Pupil Personnel Services		10.5%	13.8%	22.9%	7.3%	7.3%	7.3%	20.6%	14.7%	11.7%
Phys. Ed. & Athletics		0.0%	9.5%	1.3%	5.1%	5.1%	5.1%	5.4%	7.9%	3.1%
Instruction - High School		7.9%	6.4%	5.5%	4.8%	4.8%	4.8%	6.7%	2.4%	-2.4%
Instruction - Middle School		10.4%	10.2%	5.4%	4.8%	4.8%	4.8%	5.4%	4.1%	2.9%
Instruction - Elementary		3.5%	6.3%	2.5%	4.7%	4.7%	4.7%	3.2%	3.0%	2.6%
Other Student Services		4.4%	4.3%	-6.1%	9.0%	9.0%	9.0%	22.2%	1.3%	0.0%
Operations & Maintenance		1.0%	1.9%	3.8%	6.2%	6.2%	6.2%	2.7%	9.9%	6.8%
Equipment - Replacement		-58.0%	0.0%	0.0%	33.3%	33.3%	33.3%	25.0%	40.0%	-23.8%
Equipment - Acquisition		0.0%	0.0%	0.0%	0.0%	0.0%	0.0%	0.0%	0.0%	0.0%
Fixed Charges		0.0%	0.0%	0.0%	0.0%	0.0%	0.0%	20.0%	0.0%	0.0%
Contingency		25.0%	0.0%	0.0%	0.0%	0.0%	0.0%	0.0%	0.0%	0.0%
Sub-Total:		5.7%	7.1%	7.4%	5.5%	5.5%	5.5%	8.6%	7.1%	4.5%
Less Tuitions		6.3%	15.2%	4.4%	3.5%	3.5%	3.5%	10.8%	8.0%	71.7%
Net Budget:		5.7%	6.6%	7.6%	5.6%	5.6%	5.6%	8.4%	7.0%	0.3%

School Budget 1995-2004



Swampscott Surplus (Deficit) thru FY11

